

GIS data for St. Marys River watershed

The Fact Pages for SWQM monitoring sites located in the St. Marys River are incomplete due to the limitation of available GIS data at SJRWMD (Figure 1). This lack of data impacts four of the SWQM sites (Figure 2). Analysis of the effects on water quality of land use, rainfall, or other factors commonly displayed in GIS data, will require completion of the data to include the Georgia portion of the St. Marys River watershed.

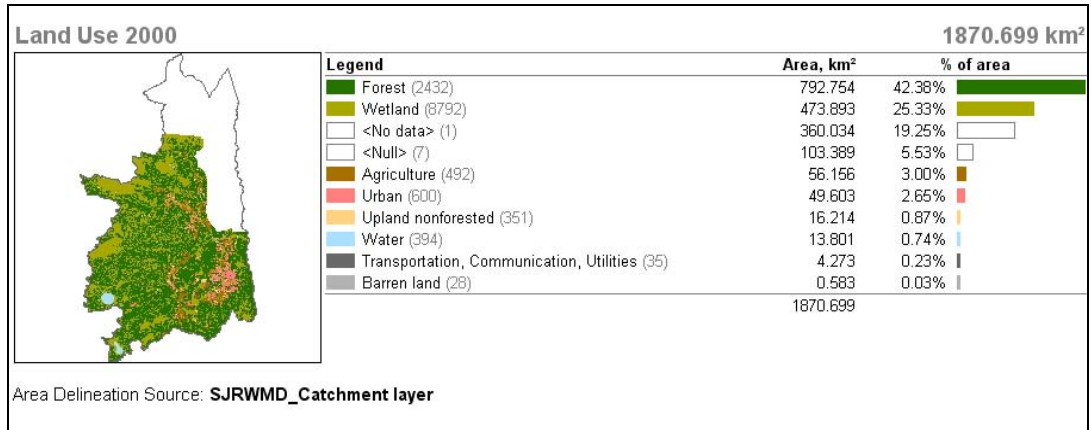


Figure 1. An example from the fact page for water quality monitoring site 0231000 in the St. Marys River.

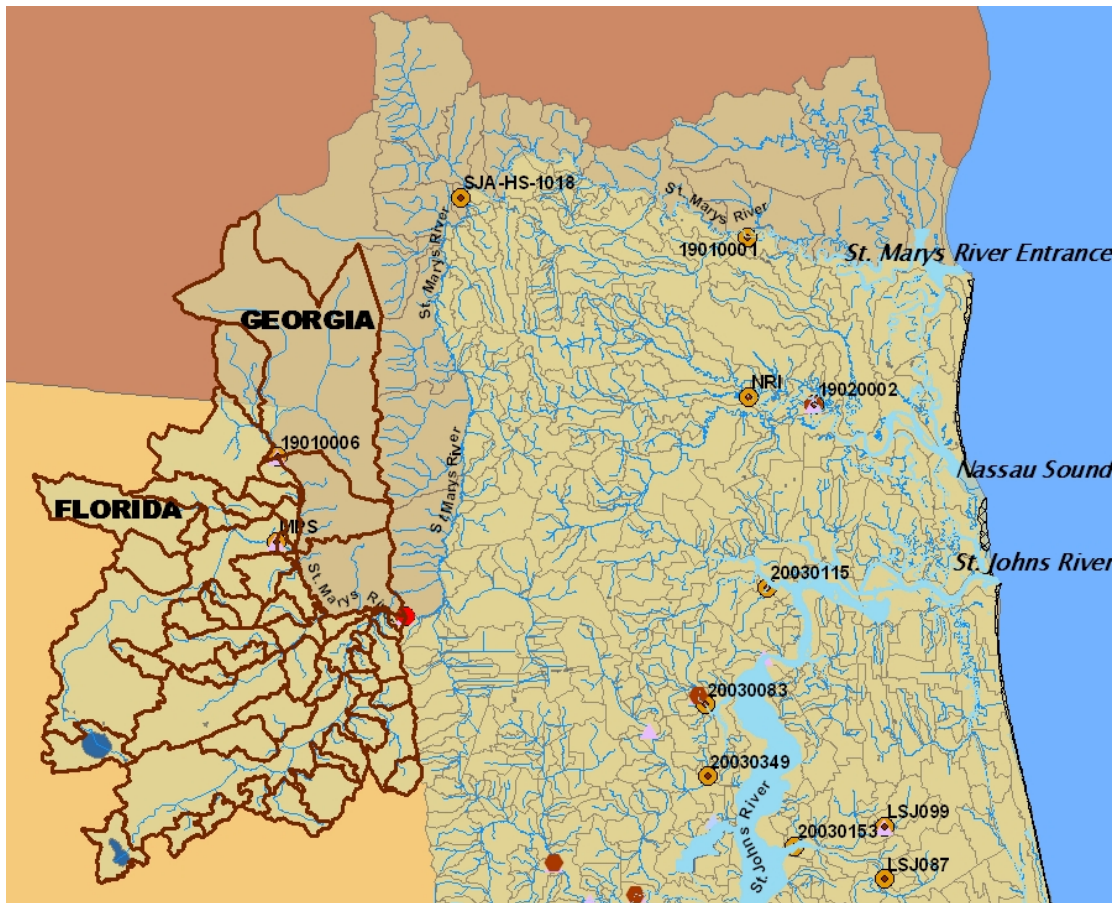


Figure 2. SWQM sampling locations in the St. Marys River.