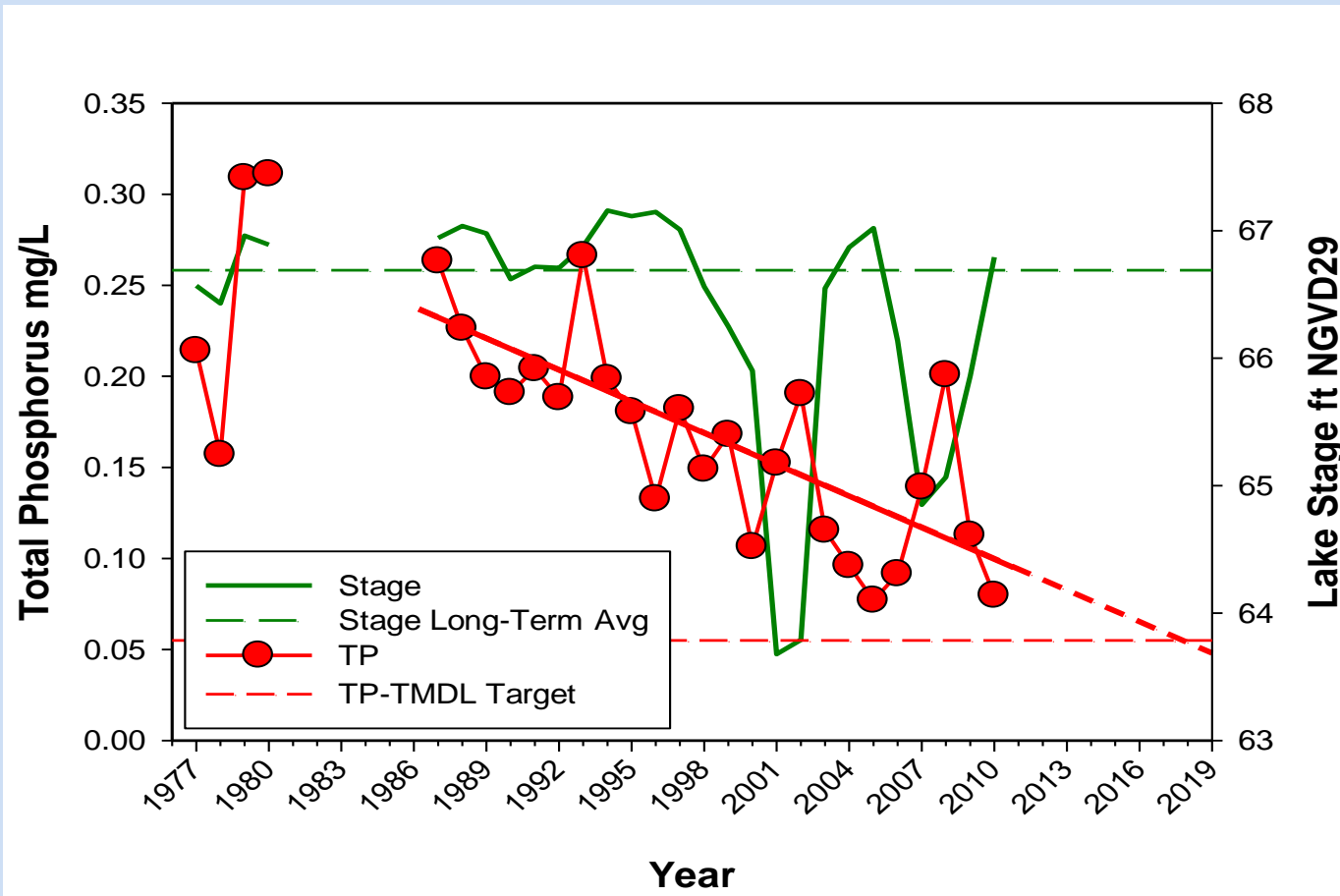
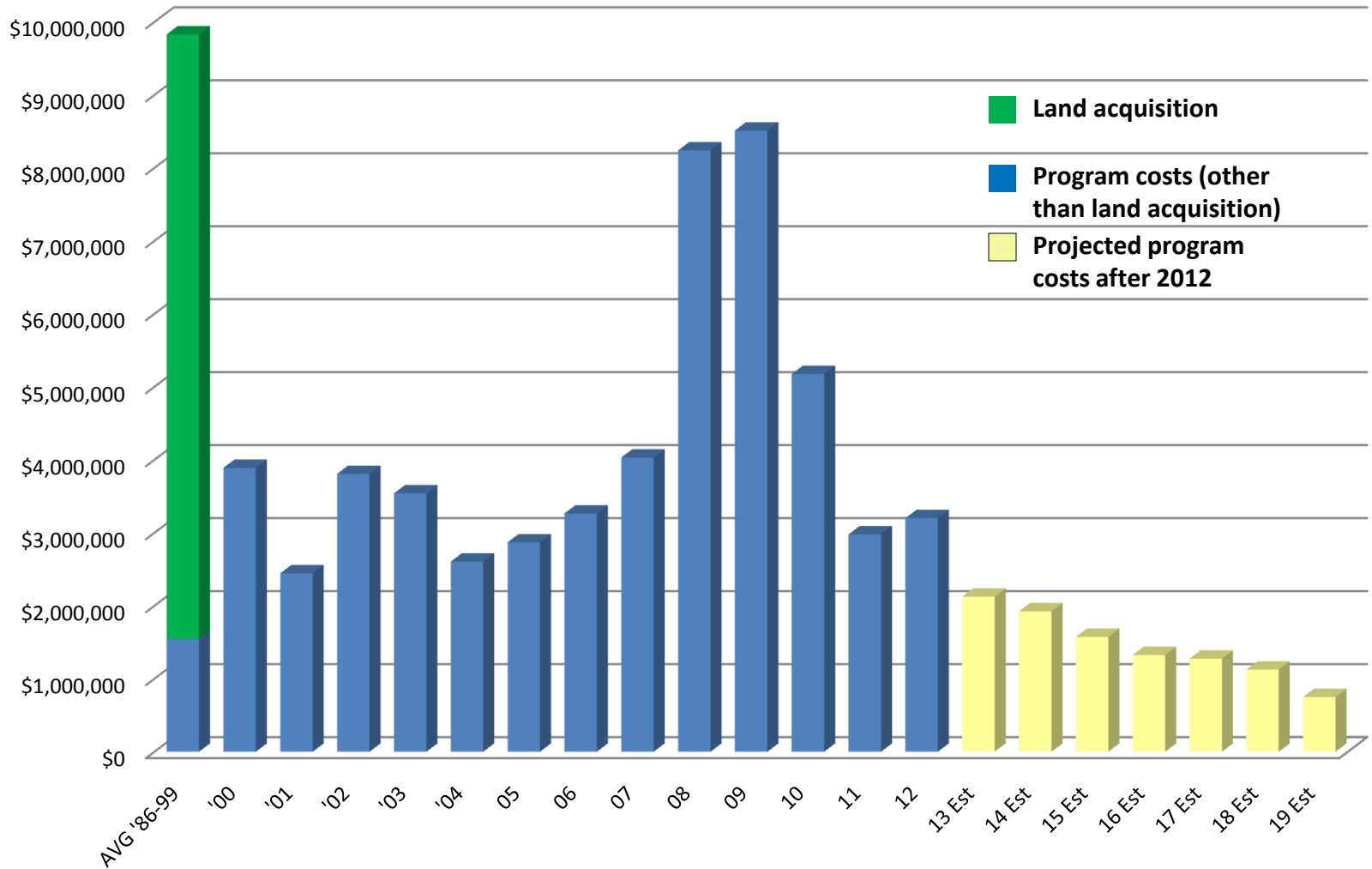


Phosphorus Concentration has Decreased



Lake Apopka Expenditures



Note: FY 1986-95 include land acquisition costs.

Lake Apopka Restoration Management

- Reducing phosphorus “loading” (going into the lake)
 - Operate North Shore Restoration Area to minimize discharge
- Removing phosphorus from the lake
 - Shad harvesting
 - Operation of marsh flow-way
- Adaptive management
 - Monitoring results (biological and chemical attributes, including pesticides)
 - Hydrilla control
 - Monitoring and evaluating new technologies



Lake Apopka Expenditures

(2012-2019 Estimated)

